



MV MERMAID II BALI - KOMODO - BALI 2009 GUEST INFORMATION PACK

as at Feb 2009

Ideal for large charters and groups – priced to suit those on a budget !

M/V Mermaid II is a 33 metre, double engine steel motor yacht. One of the most comfortable diver boats in Asia, she easily accommodates 18 guests in 8 deluxe cabins and 2 guests in a budget cabin below deck. All deluxe cabins are on the main deck with large panoramic sea view windows. Each cabin has a double bed and single bunk (max pax 2 per cabin), individually controlled air conditioning and ensuite bathrooms.

There is a wide stern dive platform with two exit ladders and fresh water showers. The dive deck is huge with plenty of room to gear up, individual boxes for your dive gear, camera table and loads of rinse tanks. The dining room is located on the main deck where delicious buffet style Thai and western meals are served. The saloon is large and spacious with lounge suites and big windows, bar fridge, tea and coffee facilities, TV/DVD, music center, library and a full selection of marine life books. There are two outside decks – the shade covered party deck has a combination of lounge chairs and cushioned sun chairs, The sundeck, located in front of the wheelhouse has full sun and cushioned sun chairs. **EANX NITROX** is available on every cruise.



MV MERMAID II BALI > KOMODO > BALI JUNE TO OCTOBER 2009

6 DAYS/7 NIGHTS – DEPARTING EVERY SATURDAY

Below are cruise prices, schedule and itinerary and details to assist with your inquiries. Our professional booking team is ready to answer any questions within 24 hours of request. Any questions ? just e-mail info@mermaid-liveboards.com or check our web site on www.mermaid-liveboards.com

Our cruises depart from Benoa in the south of Bali, only 30 minutes from the Bali airport :-

Trip #	No.Days	Depart	Arrive	Trip#	No.Days	Depart	Arrive
MMII 1/09K	6/7	30 May 09	06 Jun 09	MMII12/09K	6/7	15 Aug 09	22 Aug 09
MMII 2/09K	6/7	06 Jun 09	13 Jun 09	MMII13/09K	6/7	22 Aug 09	29 Aug 09
MMII 3/09K	6/7	13 Jun 09	20 Jun 09	MMII14/09K	6/7	29 Aug 09	05 Sep 09
MMII 4/09K	6/7	20 Jun 09	27 Jun 09	MMII15/09K	6/7	05 Sep 09	12 Sep 09
MMII 5/09K	6/7	27 Jun 09	04 Jul 09	MMII16/09K	6/7	12 Sep 09	19 Sep 09
MMII 6/09K	6/7	04 Jul 09	11 Jul 09	MMII17/09K	6/7	19 Sep 09	26 Sep 09
MMII 7/09K	6/7	11 Jul 09	18 Jul 09	MMII18/09K	6/7	26 Sep 09	03 Oct 09
MMII 8/09K	6/7	18 Jul 09	25 Jul 09	MMII19/09K	6/7	03 Oct 09	10 Oct 09
MMII 9/09K	6/7	25 Jul 09	01 Aug 09	MMII20/09K	6/7	10 Oct 09	17 Oct 09
MMII10/09K	6/7	01 Aug 09	08 Aug 09				
MMII11/09K	6/7	08 Aug 09	15 Aug 09				

Cabin Type	No. Cabins	No. Pax	Price per Pax
			6 days/7 nights/20 dives
Deluxe	8	16	€1395
Budget	1	2	€1295

Snorkellers are welcome – 10% discount off diver rate.

Charter Price:	Cabins	Pax	Price Gross
Full Charter – 18 pax	Deluxe + Budget	16 + 2	€23,615
Full Charter – 20 pax		16 + 4	€24,910
Special discount for groups/charters on application			

Group Price:	Cabins	Min Pax	Price
Minimum of 9 Pax	Deluxe	9	As per cabin combination
Special discount for groups/charters on application			

Transfers:	Max Pax	Price
Transfers from/to airport and all points in the south are FREE OF CHARGE		
Airport, Nusa Dua, Jimbaran, Kuta Beach, Seminyak, Benoa, Sanur Beach		FOC

Transfers from central and northern Bali are payable on board only :-

Price/person each way: Ubud, Padangbai, Candi Desa, Amed, Tulamben €20

Price/person each way: Lovina Beach, Permuteran and northern points €30

On Board Courses:	Price	Price
Nitrox		€185
Advanced Open Water		€200
Digital Underwater Photographer		€150
Discover Scuba Diving-	1st dive/repeat dives	€100/€75
Specialty courses:		€150
Deep Diver, Drift Diver, Multilevel/Computer Diver, Night Diver,		
Underwater Naturalist, Underwater Photographer (does not include camera rental)		
Peak Performance Buoyancy		

Note: Prebooked/paid dive courses earn 10% commission

Rental Equipment	Per item/set	Price Per Day
Important: Prebook all rental equipment - please give sizes when booking.		
We strongly recommend all divers use a dive computer.		
Full Set- items marked *	full set*	€20
Dive Computer		€5
BCD*		€7
Regulator/gauges/octopus*	item/reg set	€7
Wetsuit - shorty*		€7
Wetsuit - long*		€7
Mask/Snorkel/Fins*		€7
Compass		€4
Dive Torch	item	No charge
Weights/weight belt	item	No charge
Surface Marker Buoy	item	No charge

Others	Per	Price
National Park and Port Fees	per person	€60
Nitrox		€5
Digital Camera Rental		€30
DVD Burn		€10
Red and White Wine		€25
Beer		€2

Note Port and Park Fees are subject to change depending on government regulation

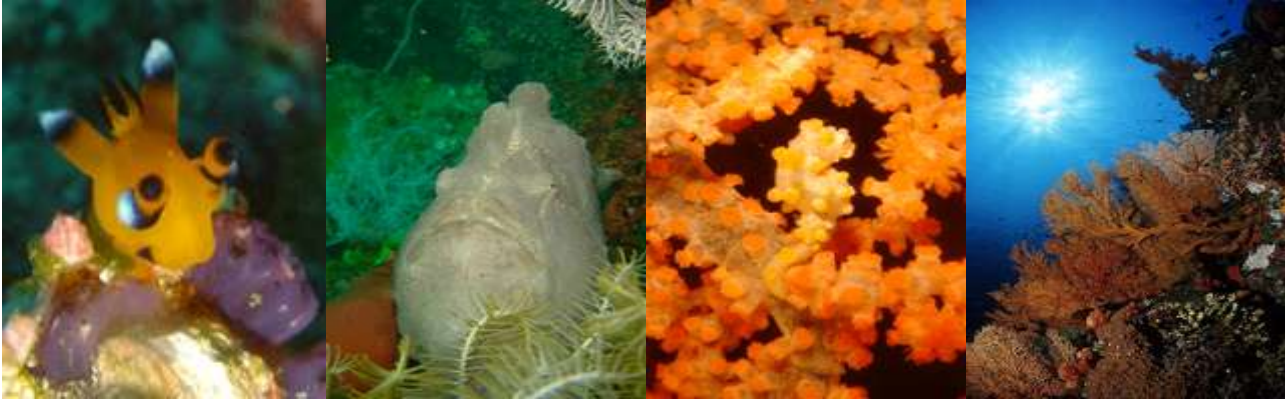
NOTE :All prices are applicable for the 2009 Komodo season only. Mermaid Cruise Ltd retain the right to alter prices without prior notice and/or introduce any additional charges as is deemed necessary. US \$/Euros are accepted on board at the boats exchange rate for that cruise Port and National Park Fees are subject to change depending on government regulation



MV MERMAID II ITINERARY 6 days/7 nights BALI - KOMODO - BALI 2008

Day/Night	Description	Dives
Saturday	Check-in on board MV Mermaid II between 14:00-16:00 hours in Benoa Harbour Bali. After the boat and safety briefing, we'll set up equipment and you can settle into your cabin. Dinner will be served approx 19:00 hours as we cruise into the sunset on overnight journey to Moyo Island, north west Sumbawa.	0
Sunday	Start your adventure with a great dive in the calm, clear waters of Angel Reef at Moyo Island. Massive elephant ear and barrel sponges, schools of long fin banner fish and red tooth triggers In their hundreds, frog fish, nudibrancs, eels, surgeon fish, snapper, dog tooth tuna checking out what is for lunch ! Visit the local village then its lunch for us ! Next is a great dive at Panjang Reef – are the pygmy seahorses around ? Then we cruise 2 hours to Satonda Island for a world class night dive after watching a million bats fly at sunset. After a great dive and dinner we cruise overnight to Sangeang Island, off the north coasts of Sumbawa.	3
Monday	2 dives at Sangeang Island for rare nudibrancs, pygmy seahorse and underwater hot springs that support this very unique marine life. Cruise to Gili Banta for exhilarating dives at Tanduk Rusa for big fish and amazing corals or GPS Point, famous for its sharks and pelagics. Then we enter the Komodo National Park and night dive at Gili Darat South Passage - sleeping turtles, colourful reef stone fish, Spanish dancers – calm sea- a great place to stay the night.	4
Tuesday	If the tide is right we hunt grey reef shark and dolphin at Taka Toko Gili Lawalaut. Dive 2 is a fast drift with pelagics and manta at Lighthouse Reef or the Old Passage. Then Crystal Rock awesome soft corals and the chance for sharks, turtles, giant Maori wrasse, a "fish soup" dive with a high chance of eagle rays too ! Then we cruise south for fascinating night dive at Pink Beach near the entrance to the Komodo National Park	4
Wednesday	Start your day with an exciting visit to Komodo National Park to walk with the dragons ! Then relax as we cruise 2 hours south to Horseshoe Bay Rinja Island. Spectacular diving awaits at the world famous site Cannibal Rock – rare nudibrancs, frogfish, spectacular corals, sponges, ascidians, huge black coral bushes, turtles, cuttlefish, loads of reef fish too ! Watch dragons on the beach, monkey, deer, wild pigs along the shore, go beach combing.... Maybe even a chance to follow whales and dolphin feeding in the calm bay. We overnight at this peaceful place, night diving at one of the many fabulous spots	3
Thursday	The Three Sisters call us to Padar Island for sharks and nudibrancs, surgeon fish and devil Rays. Manta Alley or Takat Makasar follows for the chance for a manta aggregation – WOW ! Batu Bolung aka "Current City" is the home for large Napoleon Wrasse, turtles, blue fin trevally Or maybe a dive at Tatawa Kecil – we check out the currents first to make sure the dive will be cool for everyone on board ! Then we say goodbye to Komodo National Park with a fabulous Night dive at Gili Banta with Coral Cat Shark or we cruise west enjoying a post dinner night dive along the way. Overnight we cruise to Satonda Island	4
Friday	We enjoy two fantastic dives at Satonda and Moyo Islands for more chances for ghost pipe fish, ribbon eels, turtle, cuttlefish and more before we cruise overnight to Benoa in the south of Bali.	2
Saturday	After breakfast we transfer you ashore at 9am to continue your vacation...or its time to head home to start planning your next Mermaid cruise !	0
TOTAL DIVES		20

MV MERMAID II BALI > KOMODO > BALI TRIP INFORMATION



Number of Dives/Site selection: We plan a minimum of 20 dives subject to weather conditions and security/safety issues. Dive site selection detailed in the published itinerary is subject to change by the Captain or Cruise Director without prior notice. There are numerous fantastic sites in Nusa Tenggara and Komodo and our objective is to take you to the best of the best ! Repeat guests – we'll take you to some new sites or more of those you really love !

What diver certification level is needed for diving in Komodo ? :

Everyone is welcome on board, no matter what level your certification. Dive groups and site selection will be chosen to meet your safety, comfort and diving ability – and is subject to the discretion of the Cruise Director. Our professional dive crew will take you on the easy route or to another site if you don't like currents. If you are up for it, we'll take you right into it for all the action the site offers ! You may wish to bring a reef hook for some dive sites.

Dive Guides and Diver Safety: Our experienced dive crew would be delighted to assist you. Divers are welcome to dive with their buddy on sites deemed suitable by the Cruise Director. **For diver safety the use of individual dive computers is mandatory for all divers.** Nitrox fills and courses are available on board to enhance your diving safety. Please allow 24 hours between last dive and flying. Guests are requested to show diving certification cards on checking in and are strongly recommended to have valid dive insurance (Padi, Dan or equivalent).

Departure and Arrival Times: Guests are required to arrive in Bali no later than 14:00 hours which will allow us to make our planned 16:00 departure from Benoa port. Final cruise departure time is subject to guest arrival times. Please liaise with Mermaid Liveboards if your flight times cannot fit this schedule.

Transfers: Transfers from/to the airport or hotels in the south are free of charge. From destinations in central and northern Bali, there is a small charge. Please refer to the price list.

Guests arriving before 12 noon on departure day will be transferred to PT Indonesia Liveboards at Sanur Beach where you can leave your luggage in safety till boarding transfer at 14:00 hours. After meeting the friendly crew at PT Indonesia Liveboards you can relax on the beach, enjoy a massage, go sight seeing or shopping till 14:00 hours when you will be transferred to the vessel.

Pick up times : 13:00 – Nusa Dua, 13:30 Jimbaran, Seminyak; 14:00 Kuta Beach, Legian, Sanur Beach; 11:00 Tulamben; 12:00 Candi Desa, Padangbai, Ubud; Time to be advised for Lovina Beach and northern Bali.

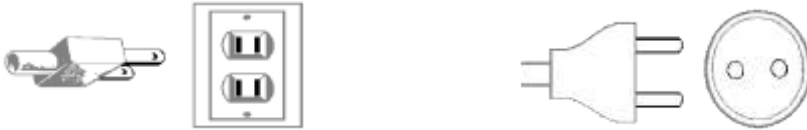
Water Temperature and Wetsuit recommendations:

The Flores Sea with its usually clear blue waters, great visibility has water temperatures of approx 26-28 degrees (northern dive locations) – a 3-5 mm shorty is okay with most guests comfortable with a 3-5mm long. The Sumba Sea (southern dive locations) has an average temperature of approx 24 degrees – the awesome diving lets you forget about the cooler waters ! Think about a 5mm long possibly adding a vest or renting a shorty to go over the top if you feel the cold. Hood, gloves and booties are strongly recommended for these cooler waters.

Equipment on board: Full rental equipment is available including a good range of long wetsuits and a few open heel fins. Please advise your rental equipment needs including sizes when you book. MV Mermaid II carries mostly 12 litre aluminium tanks with a few 15 litre steel/aluminium tanks available. Tank valves are international and some DIN adapters are available on board. Any dive equipment failure or loss will require you to rent a replacement from Mermaid Liveboards at our published rates. If Mermaid Liveboard equipment is lost/damaged, full replacement cost will be charged at the discretion of the Cruise Director. Published equipment prices are available on board.

Camera Stations : There is a large camera table on the dive deck with several rinse containers catering for small to super large camera/video setups. There are several power points in every cabin plus throughout the saloon area for charging. Each table in the saloon has an electrical outlet for your laptops. Usually our dive crew will have a laptop available in case you experience any problems with yours. As possible, we also offer a DVD burning service in case you cannot bring your laptop with you.

Electrical current and plugs : 220 volts is standard throughout the boat. 110v adapters are available. Please ask the Tour Leader on boarding if you are not sure what to use. We have a few adapters on board. The cabins can handle both the following plug types :-



Meals: Our Thai cook is excellent, preparing a variety of Thai and Western dishes. Please advise any special meal requirements on the guest information form.

Currency: Please pay all on board costs in € Euros, \$ US or Indonesian Rupiah. We can accept credit card payment for all on board costs excluding crew gratuities. Credit card payments incur a 3% fee. We suggest you also have some rupiah for souvenir shopping in Komodo, massages, small items etc at Sanur Beach. Exchange rates vary. The airport's rate is lower than the rate you find at most small currency exchanges. Bank rates are low and take a long time. \$ US and € Euros are accepted by the souvenir sellers in the Komodo National Park but rupiah is preferred. There are several currency exchange services and ATM machines near PT Indonesia Liveaboards and at the airport and ATM's at Benoa port.

Luggage and what should I bring : All luggage will be taken on board. If you have large bags you do not need on the trip, please arrange to leave at your hotel if possible or at PT Indonesia Liveaboards in Sanur. Other items you may need on board are bathing suits, shorts, t-shirts, sunscreen and a light weight jacket or sweater. Good walking shoes for your time in Komodo National Park ! (trainers are fine – slip on sandals not recommended)

Can I be contacted while on board : You can use your mobile phone most days except when we are in the north. Other times you are welcome to use our satellite phone. Please note the charge is €3 per minute for outgoing calls and €1.50 per minute for incoming calls.

Insurance : You need 2 types of insurance when planning your dive holiday – 1) Diving insurance is strongly recommended due to the high cost for you should you have a diving accident and require hospitalization and/or hyperbaric chamber care. Please contact www.diversalertnetwork.org to check which Dan area can cover you. Click on About Dan for links to all the Dan organizations around the world.

2) General travel/cancellation insurance. There are several companies around the world that can assist and we suggest you look at www.worldnomads.com for reliable and professional service recommended by The Lonely Planet. If you are unable to make your dive trip and the date has past our cancellation terms and conditions we are very sorry but regardless of the circumstances we cannot refund or transfer to another date.

Medical Assistance : Mermaid I cruises to remote areas however we are prepared to handle most accident or medical emergencies. Mermaid's management team is available 24 hours a day via our satellite communications to expedite tried and tested emergency evacuation plans to the nearest recompression chamber and/or modern hospital in Bali. Our dive crews are first aid trained and we have an extensive first aid kit on board plus loads of emergency oxygen. Please bring any of your own medications that you may need. You can help as well by making sure you are in good condition for diving – prevention is always better than the cure. Please remember to dive safely and to make sure your Dan or other dive insurance is up to date.

I want to dive Bali as well : There is loads of excellent diving in and around Bali as well. Please contact us for special Liveaboard + Bali diving/accommodation packages. Detail how many days/diving days you would like, what class accommodation and we can recommend a package to suit.

MERMAID CRUISE LTD

General Booking, Cancellation, Payment and others policies

(effective date October 2008):-

Acceptance of the above booking means that you and or your agent agree to the terms and conditions as outlined below in their entirety

Payments are to be made by telegraphic transfer or by international money order in Euros, net of charges, to the account indicated on your invoice. We cannot accept personal or bank cheques due to high bank clearing fees. Credit card payments are accepted however will be charged in Thai Baht using the company's conversion rate on the day of payment.

Guests paying on board charges via credit card incur a 3% fee

Please fax remittance transfer slip as soon as transfer has been made to fax no. +66 076 344578 or +66 76 341853 or send via scan email.

Mermaid Cruise Ltd reserves the right to alter published rates without prior notice and/or to introduce any other fees as deemed necessary by the company. Mermaid Cruise Ltd also is held accountable solely to the laws of Thailand (booking headquarters). Any contractual laws from countries other than Thailand remain the responsibility of you and or your agent to manage. National Park and Port fees are subject to increase and/or amendment by government policy and are out of the control of Mermaid Cruise Ltd.

Prices include: Transfers from/to airport and all points in the south, all meals & snacks, coffee, tea, hot chocolate, soft drinks and drinking water, tanks, weights, weight belts and diving with experienced Divemasters/Instructors.

Prices do not include: Transfers to/from central and northern Bali, National Park and Port fees €60, Fuel Surcharge if applicable, NITROX fills (€5), rental equipment, on board courses and alcoholic beverages

IMPORTANT NOTES : Please fill in the guest information form **AT TIME OF BOOKING** and forward immediately to Mermaid Liveaboards via email info@mermaid-liveaboards.com or via fax +66 76 344578. Please ensure you provide an email address and phone contact number plus complete the emergency contact information section.

Transfer information is required to be provided a minimum of 4 weeks prior to the cruise. Guests may go directly to Mermaid I at Benoa Port any time after 12 noon – have the taxi driver call our local number to check how to get there. Please advise Mermaid Liveaboards of your plans via email info@mermaid-liveaboards.com

When checking in, all divers are required to complete a liability release waiver and to show proof of diving certification and dive medical insurance such as Padi, Dan or equivalent. Please you have these available in your hand luggage.

Payment and cancellations - the fine print :

FIT and Group Bookings (less than 8 pax):

Deposit

Final Payment

Last Minute Bookings

Deposits, Payments and Cancellations -

30% within 10 days of booking

60 days prior to departure

100% payment within 24 hours of booking or before boarding for bookings made on day of departure

Cancellations:

More than 90 days prior departure:

Refund of deposit less €100.00 administration charge

90 to 60 days prior departure:

Deposit lost

Less than 60 days prior departure:

No Refund

Full Boat Charter or Group Bookings

(8 pax or more) :

Deposits, Payments and Cancellations -

A 10% non-refundable deposit is required within 10 business days of booking. If not received, the cruise will be open for resale.

The next 25% of the total cost to be paid at least 120 days before the departure date.

The balance, 65% of the total cost, to be paid at least 90 days before the departure date.

Cancellations:

More than 120 days before the departure date, all payments will be refunded, less the 10% initial deposit.

Less than 120 days but more than 90 days before the departure date all payments will be refunded,

less 35% of the total cost. If a cancellation is made for part of the group then the refund will be pro-rated accordingly ie. All payments for the cancelling guests will be refunded less 35% of the total cost of each cancelled guest. Less than 90 days before the departure date, no refunds will be made.

Mermaid Cruise reserves the right to cancel any trip if there are less than the equivalent of 3 deluxe cabin guests. Mermaid Cruise will do their utmost to transfer the guest to a vessel they deem to be of equal or better standard. Alternatively, we may ask the guest to transfer to the date before/after the cruise. In the event none of these options are possible, we will offer a full refund (allow maximum 1 week processing time)

Mermaid Cruise do not accept any legal liability for loss or damage to any luggage or dive equipment while being transferred to/from the vessel nor while on board. Mermaid Cruise will offer any assistance possible to help with any insurance claims for lost or damaged property.

Lastly, Mermaid Cruise Ltd. does not offer refunds in the event of personal injury, airplane delay, mechanical breakdowns, weather, sickness, strikes, war, criminal acts, quarantine, acts of god, if another guest requires immediate evacuation and the vessel must return to port or any other event beyond its actual control.

Guests are strongly advised to have valid dive medical, travel and cancellation insurances

Regardless of which cruise you choose ... Be prepared for some of the world's best diving plus a maximum of comfort, service and safety on M/V Mermaid I & II - Welcome on board !

**Note: Mermaid Liveboards Booking Hotline
+66 08727 48348 Thailand; +62 081 337 778 077 Indonesia**

Mermaid I & II

Thailand, Burma & Indonesia

Tel: +66 076 344612 - Thailand

Fax: +66 076 344578, 076 341853 - Thailand

Thailand Mobile: +66 08727 48348 Mermaid Liveboards Hotline

Indonesia Hotline + Mobile: +62 081 337 778 077 or Made Mertayasa +62 081 338 355 233

info@mermaid-liveboard.com

www.mermaid-liveboard.com

Mail address:

Mermaid Cruise Ltd Partnership
3 Sawatdirak Road
Patong, Kathu, Phuket
Thailand 83150

Mermaid Liveboards – Bali Guest Lounge
PT Indonesia Liveboards
Sanur Arcade #H
27 Jalan Danau Tamblingan
Sanur Beach Bali Indonesia
Ph +62 361 282609; Fax +62 361 287 325
Mobile: +62 081 337 778 077